

MODULAR
APARTMENTS
VERSION A





ENZO takes on all aspects of architecture: design, urbanism, landscapes and interiors. We make sure the building and its surroundings are one integrated design. With inspiration and our full attention we bring this integrated approach into practice. We don't do this alone, but together with our business and private clients. And together with our team. Meanwhile the ENZO team counts 18 colleagues. The name ENZO reflects the team-feeling. 'We didn't want to become architecture firm Van Rijn and Abdul. We do it together.'

ENZO architectuur N interieur

+31 (0)172 50 30 90
info@enzoarchitecten.nl



Aulis Lundell Ltd is a leading Scandinavian manufacturer of cold rolled LGS profiles, sustainable offsite modular buildings and prefabricated panelized systems.

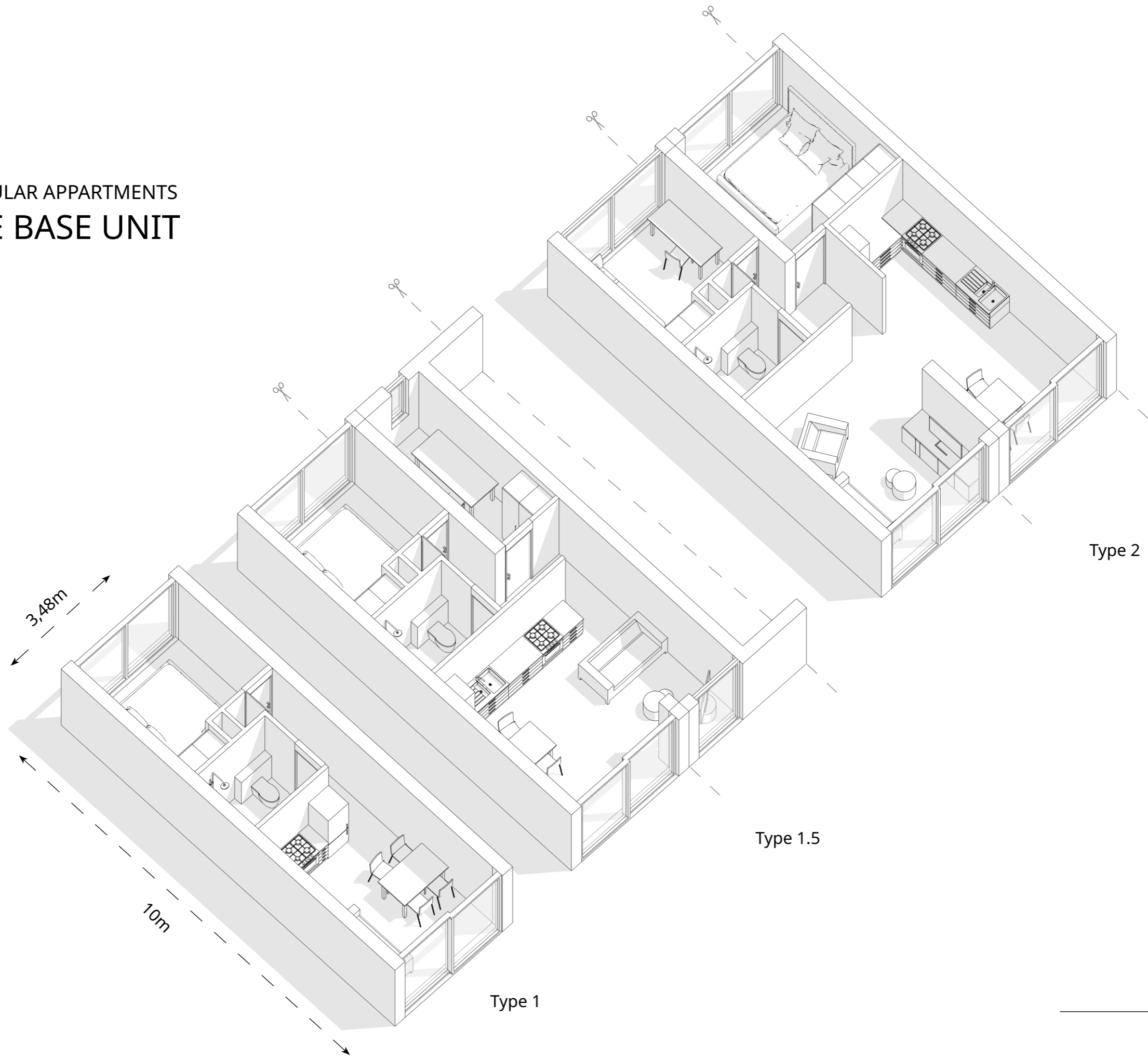
The company is a Finnish family business and has delivered LUNDELL-PROFILE products manufactured from hot dip galvanized steel plate by roll forming technology since 1980.

Aulis Lundell Ltd is located in Lohja, Finland and operates in 6000 m² of product facilities. Additional factory space of 5000 m², which will accumulate the production capacity of both modules and panels dramatically, is under construction and will be ready in summer 2023 to meet the demands of MMC customers throughout Europe.

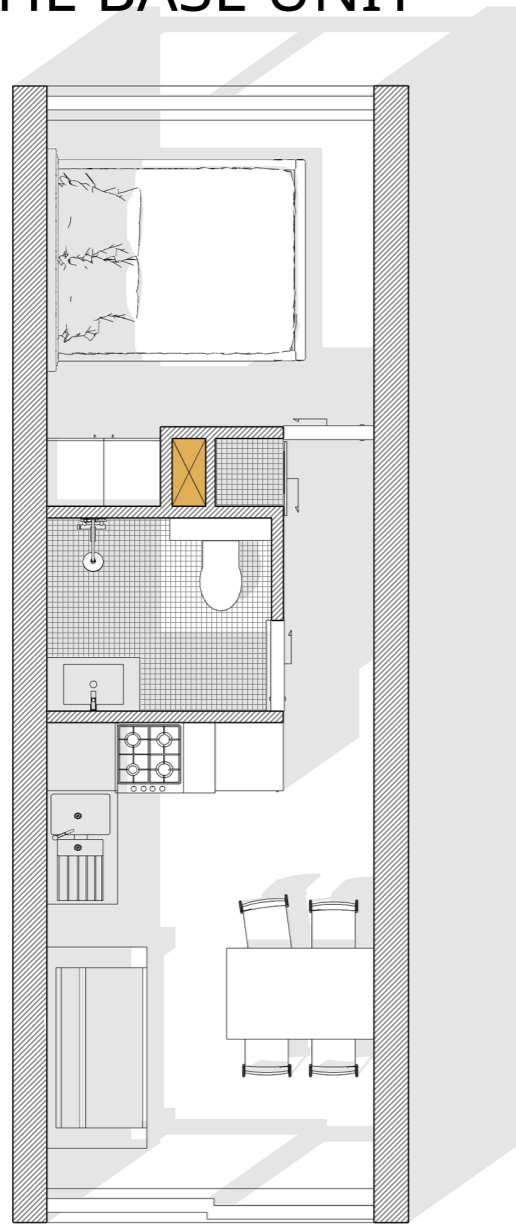
Aulis Lundell Oy
Edzo Bosma

+31 (0)85 021 09 01 (Tel)
+31 (0)6 5105 4280 (Mob)
edzo.bosma@aulislundell.com

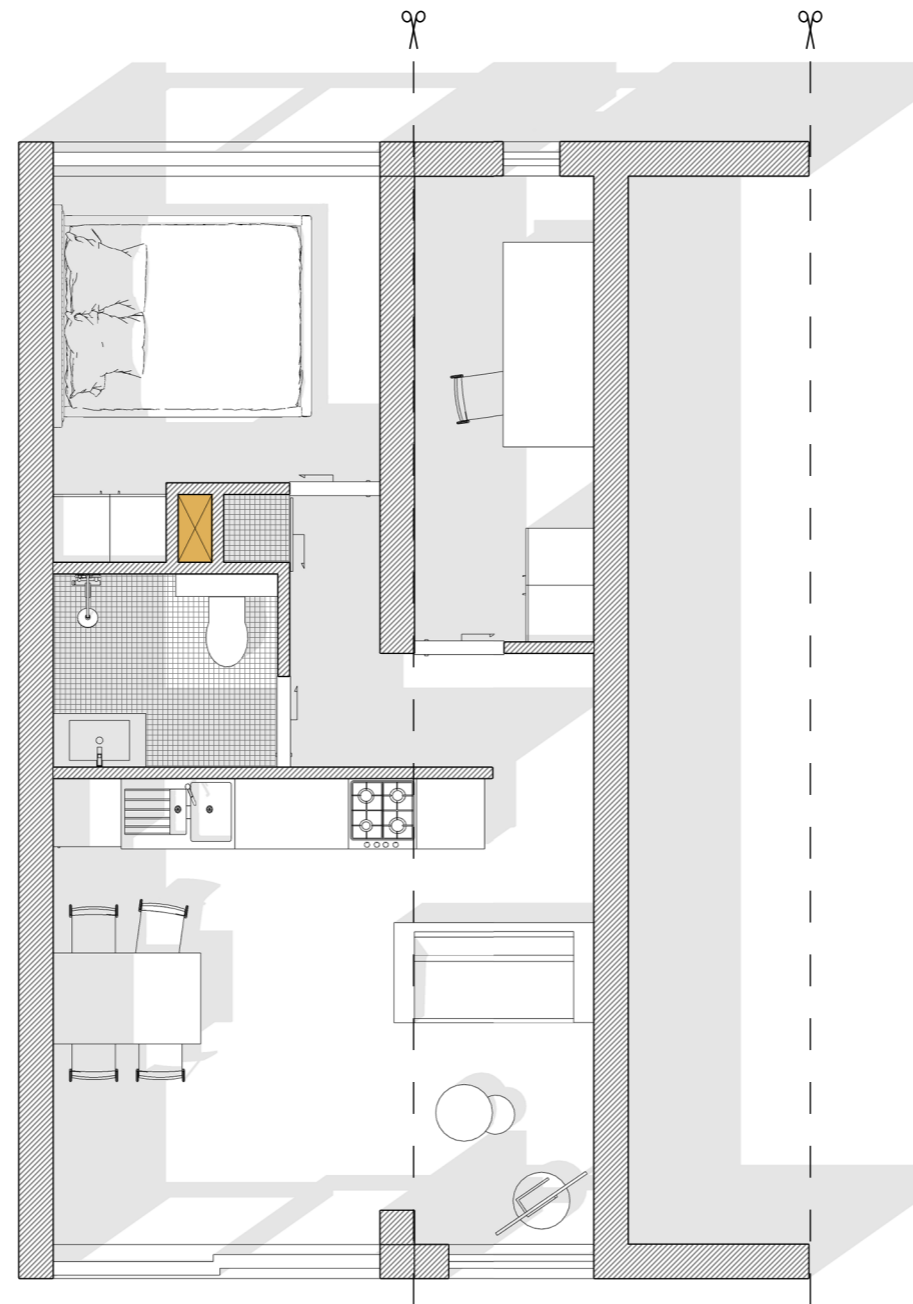
MODULAR APARTMENTS
THE BASE UNIT



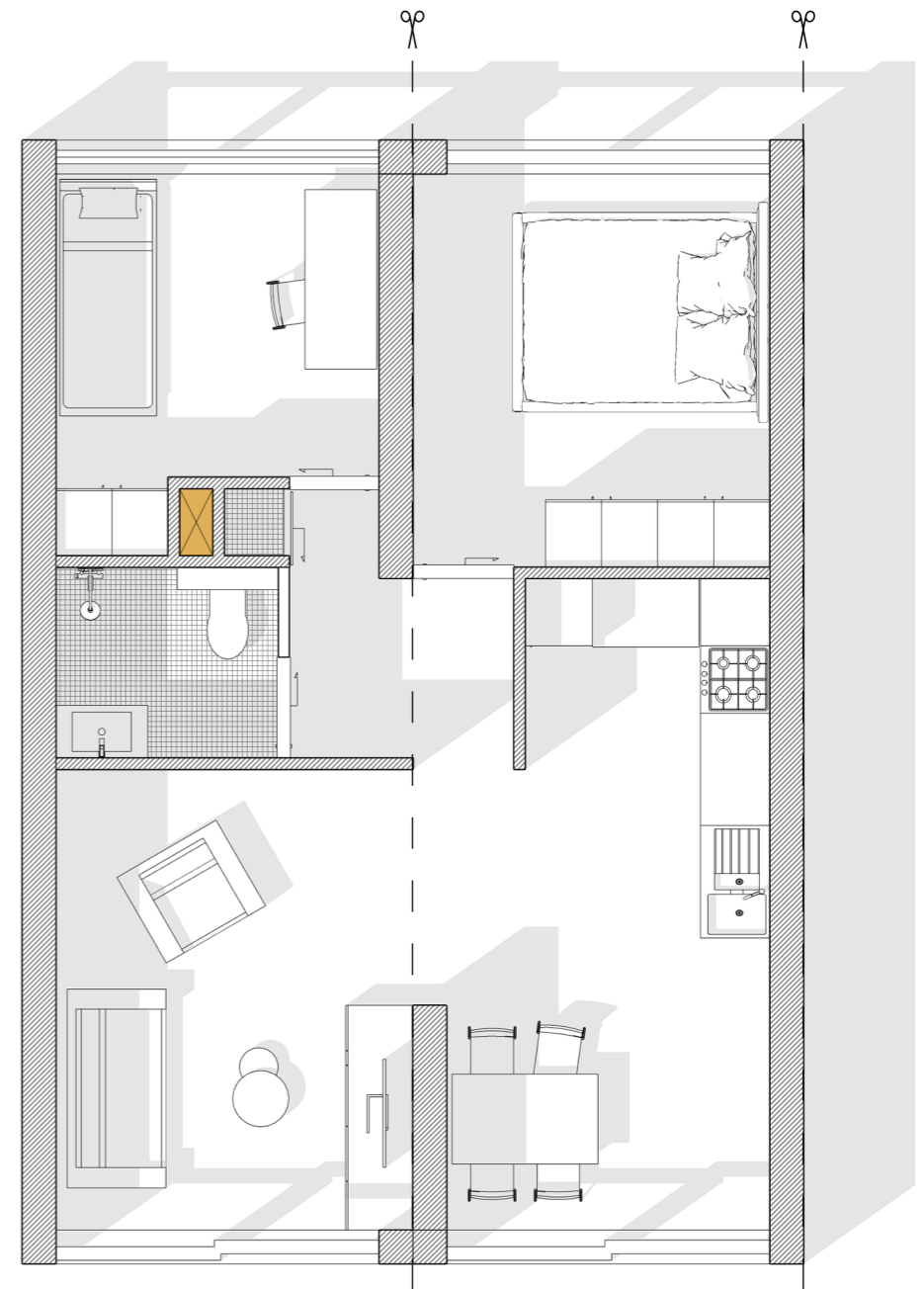
MODULAR APARTMENTS
THE BASE UNIT



Type 1



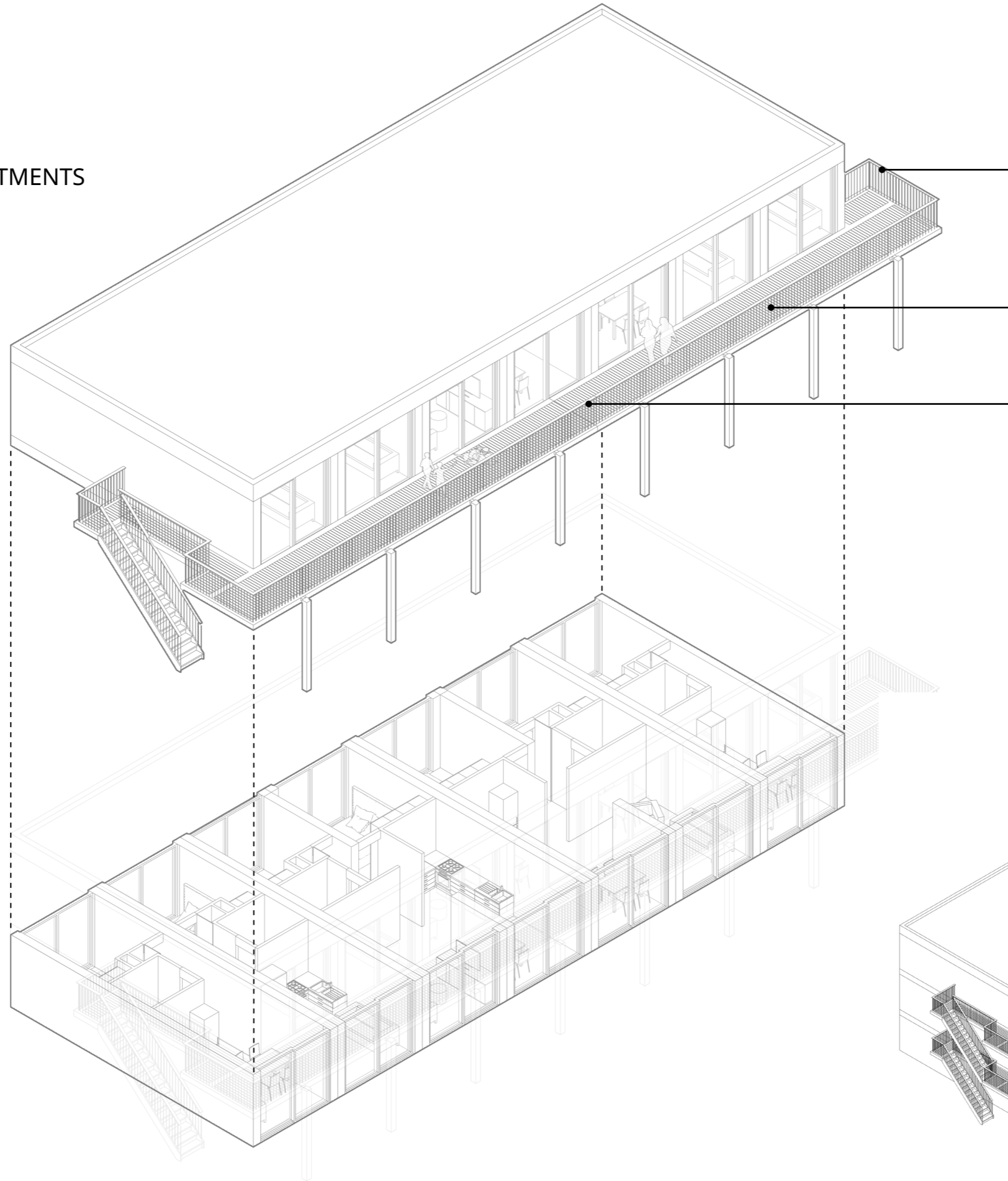
Type 1.5



Type 2



MODULAR APARTMENTS STACKING

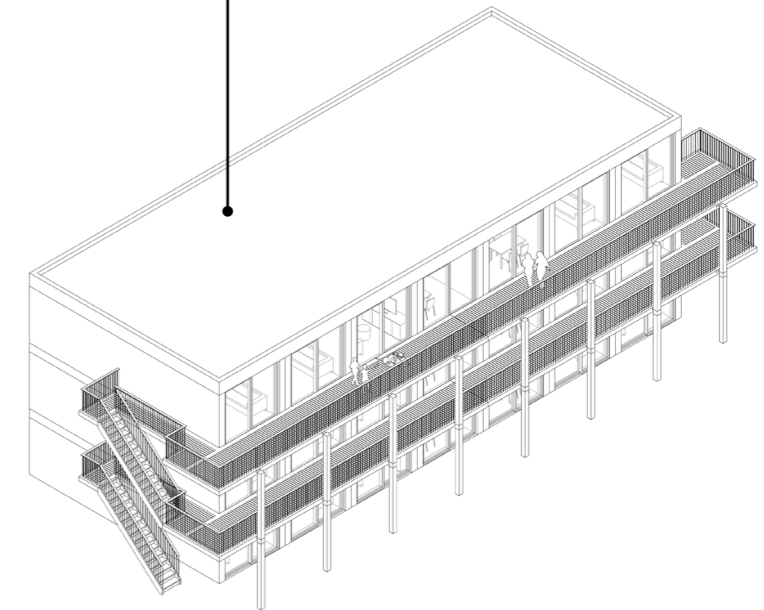


The galleries can have both one or two stairways.

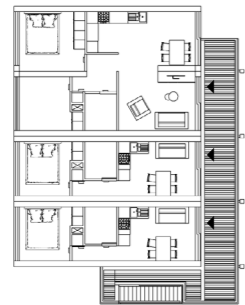
Every next floor gets a gallery.

The galleries are extra wide and therefore also function as outside space for the apartments.

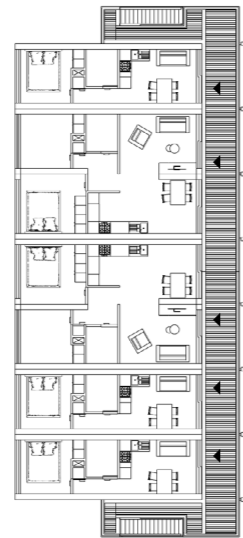
Stacking up to 3 layers without the need for supplementary construction.



MODULAR APARTMENTS LAYOUT

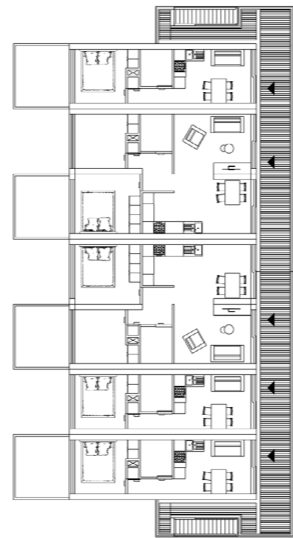


Gallery basic



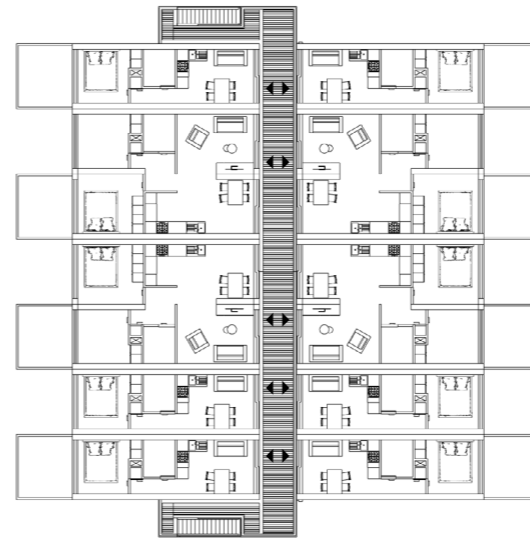
Gallery w/ double stairway

For larger series of apartments double stairways can be applied.



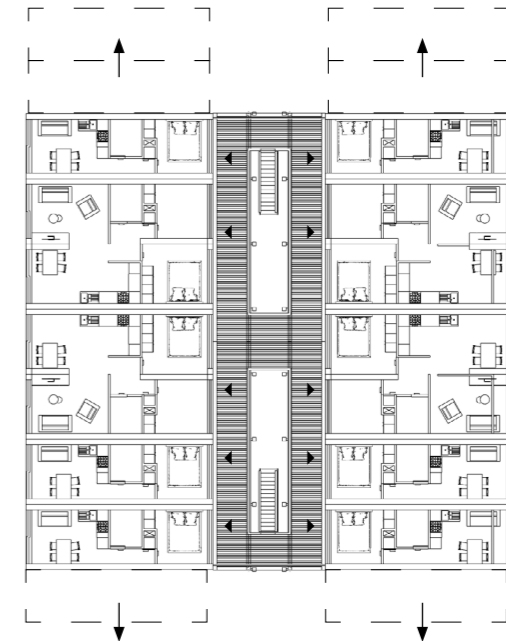
Balconies

Outside space is mandatory. This can be created by an extra wide gallery or by balconies for the apartments.



Mirrored layout

The gallery can be shared with another row of apartments.



Mirrored layout alternative

For larger rows of apartments it would be interesting to relocate the stairways. This would also create a lighter space in between the apartments.



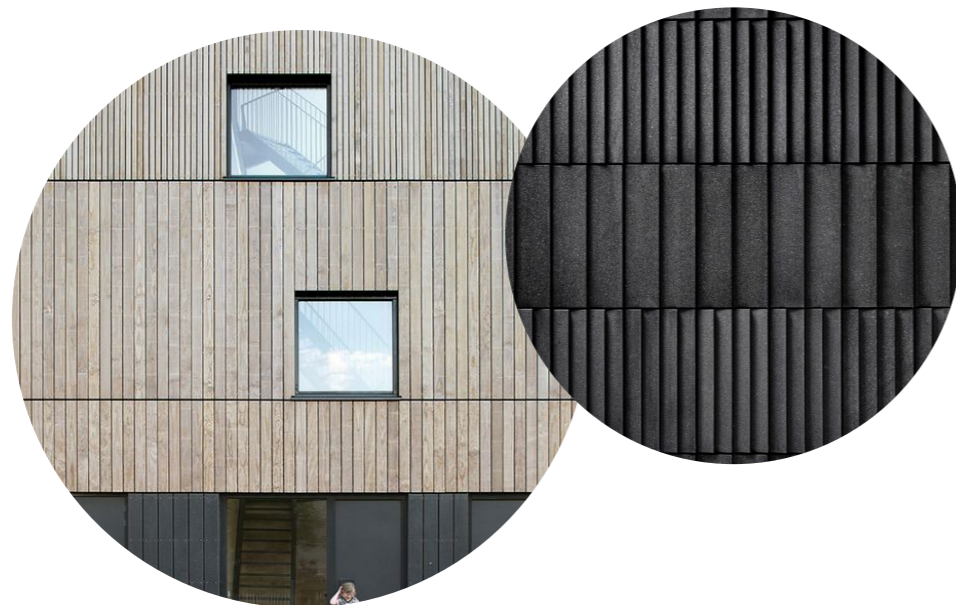
MATERIALS
IMPRESSIONS



Wood cladding - Planks of different sizes - two tones to distinguish openings in the facade.



Thin bricks - Lightweight brick facade
Feldhaus klinker - Thin bricks



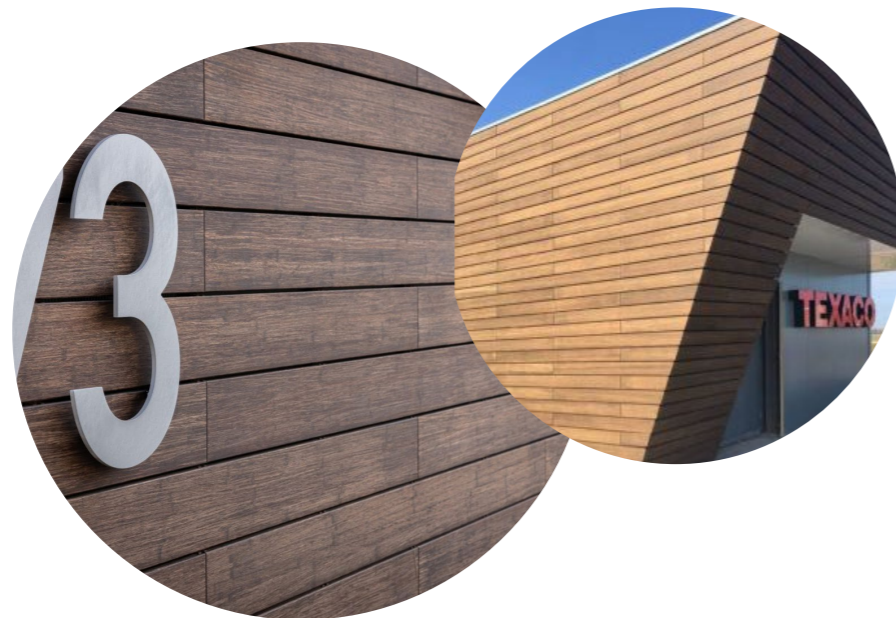
MATERIALS
IMPRESSIONS



Bamboo Cladding - Comparable to an ordinary wood facade but reducing the carbon footprint
Moso Bamboo - Bamboo x-treme cladding

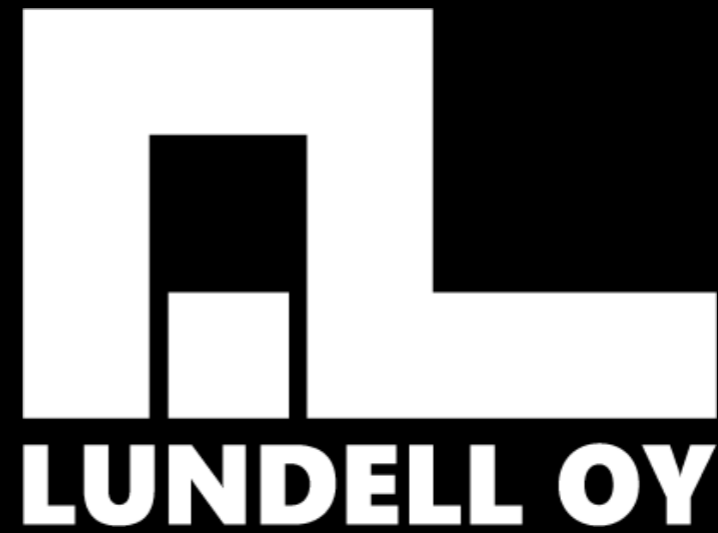


SemperGreenwall - Green facade system
SemperGreenwall Outdoor





ENZO[®]



www.enzoarchitecten.nl

www.aulislundell.com